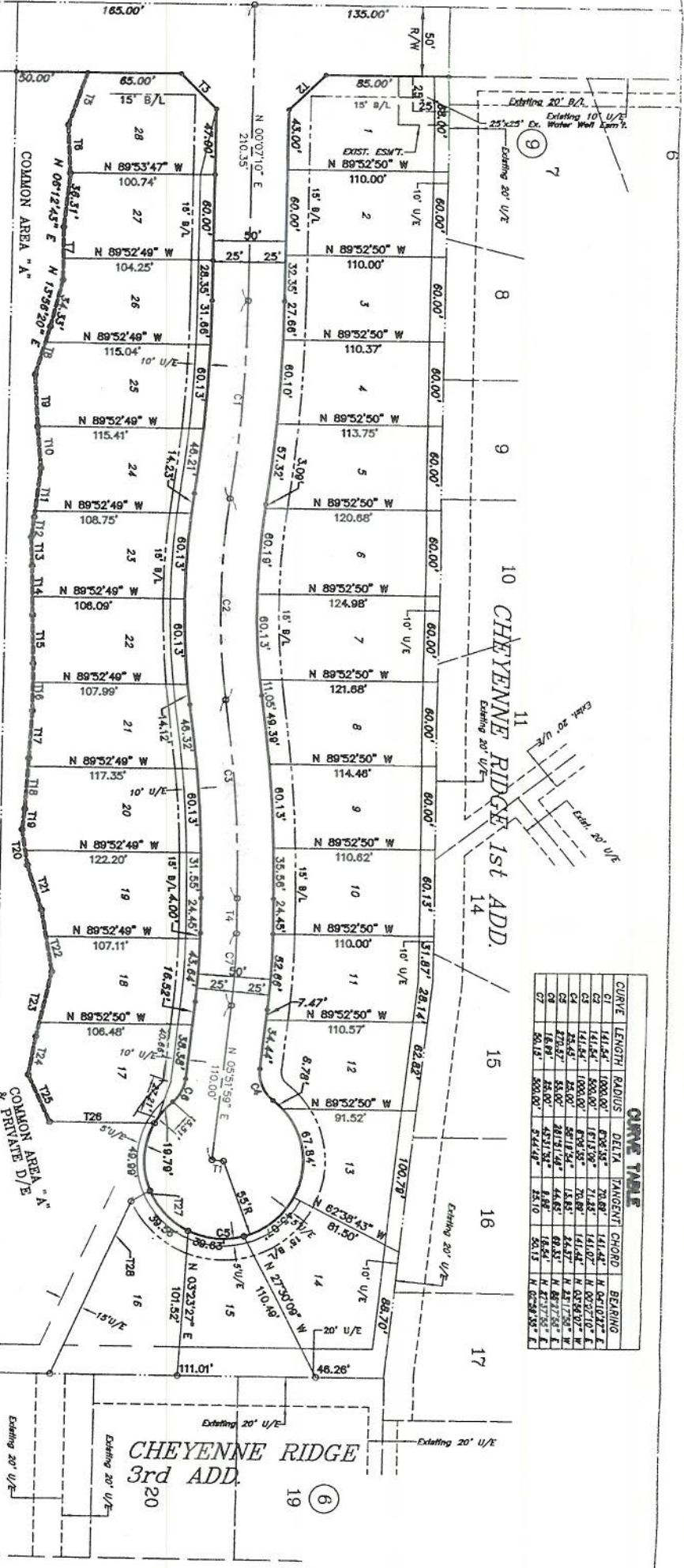


CURVE	LENGTH	RADIUS	DELTA	TANGENT	CHORD	BEARING
C1	141.44'	1000.00'	70.89°	70.89'	141.44'	N 02°10'27" E
C2	141.44'	1000.00'	70.89°	70.89'	141.44'	N 02°10'27" E
C3	141.44'	1000.00'	70.89°	70.89'	141.44'	N 02°10'27" E
C4	141.44'	1000.00'	70.89°	70.89'	141.44'	N 02°10'27" E
C5	141.44'	1000.00'	70.89°	70.89'	141.44'	N 02°10'27" E
C6	141.44'	1000.00'	70.89°	70.89'	141.44'	N 02°10'27" E
C7	141.44'	1000.00'	70.89°	70.89'	141.44'	N 02°10'27" E



NOTE:  
MAINTENANCE OF THE WALL IS THE RESPONSIBILITY OF THE HOME OWNERS



Scale: NTS

UNPLATTED

I, the undersigned, a Notary Public in and for the State of Oklahoma, do hereby certify that the foregoing is a true and correct copy of the original recording of the same as the same appears in my records.

Witness my hand and seal the day and year last above written.

Notary Public

This original tracing meets the requirements as outlined in Senate Bill 577, Section 518, as amended.

Satish Dasharathy  
Professional Engineer No. 11456



BY:

Chief Deputy

**REPLAT OF  
CHEYENNE RIDGE VILLAS**

**AN ADDITION TO THE CITY OF EDMOND, OKLAHOMA, OKLAHOMA COUNTY  
A PART OF THE NORTHWEST QUARTER (NW/4) OF SECTION 7, T-18-N, R-2-W, 1.M.**

COMMON AREA "A"  
DETENTION POND

CHEYENNE RIDGE  
3rd ADD.

0.7439' 100' 10" line from 1" scale = 7.439' more or less.